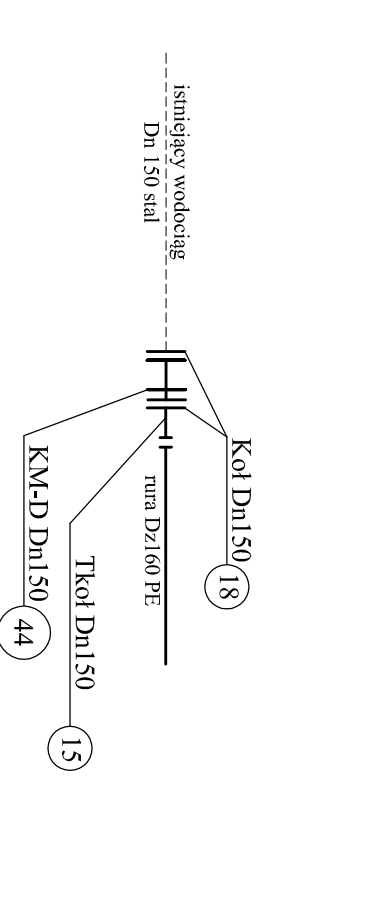


W3, W4a, W5, W6, W7, W8, W11, W13, W14, W16, W17, W19, W20, W21, W22, W24 W25, W26, W27, W28, W29, W30, W31 W32, W33, W34, W35, W36, W37, W38 W40, W41, W42, W44, W45, W46, W47 W48, W50, W51, W52, W53, W54, W55 W56, W57, W59, W60, W61, W62, W63 W64, W64a, W65, W66, W67, W68, W69 W70, W71, W80, W81, W82, W83, W84 W85, W86, W88, W90, W91, W92, W93 W94, W95, W96, W97, W99, W100, W101, W103, W104, W105, W106, W107, W108

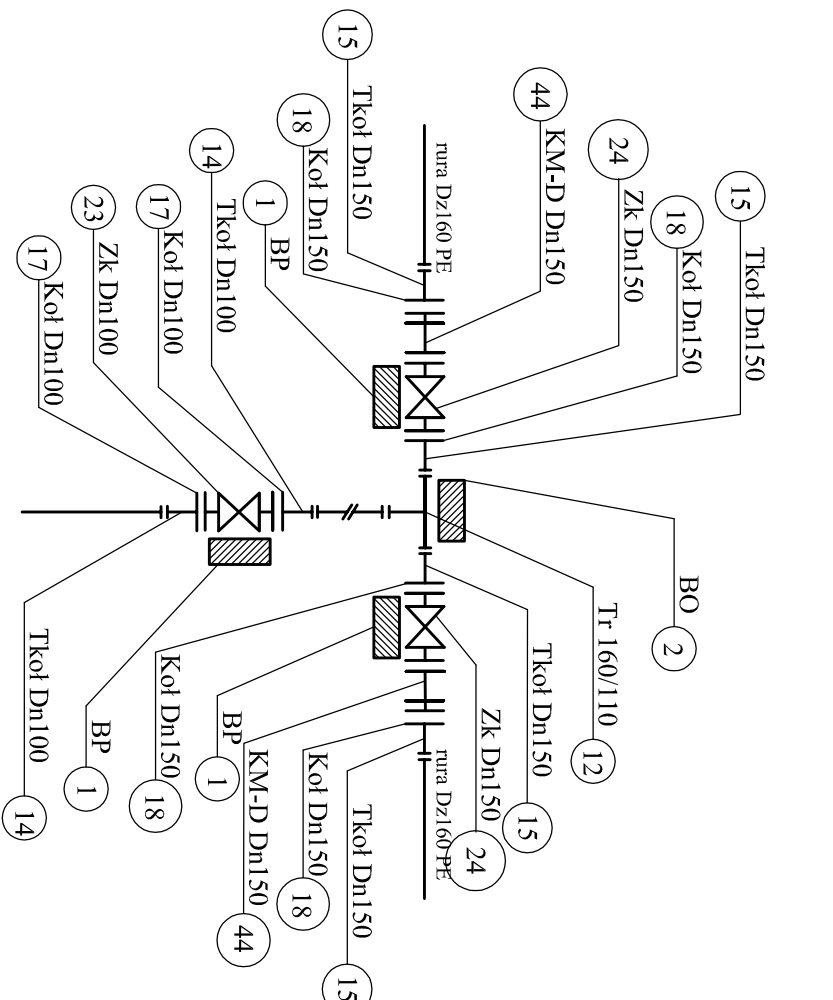
Hydrant nadziemny na rurze Dż160

H1, H2, H3, H4, H5, H6, H7, W49, H9, H10, H13, Hn3

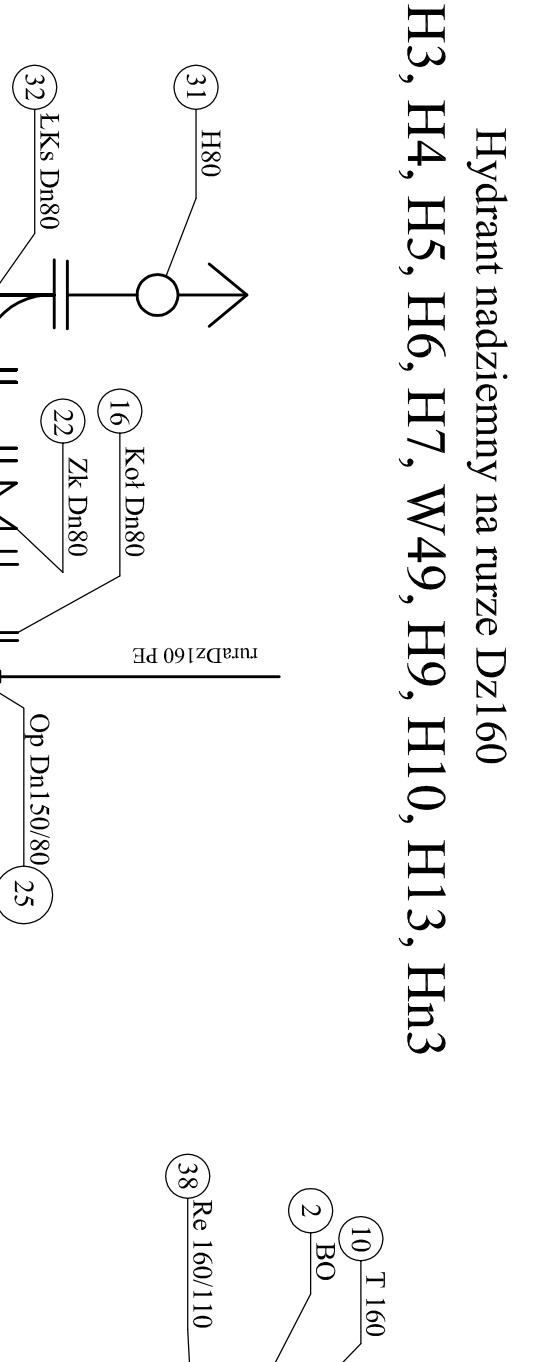
W1



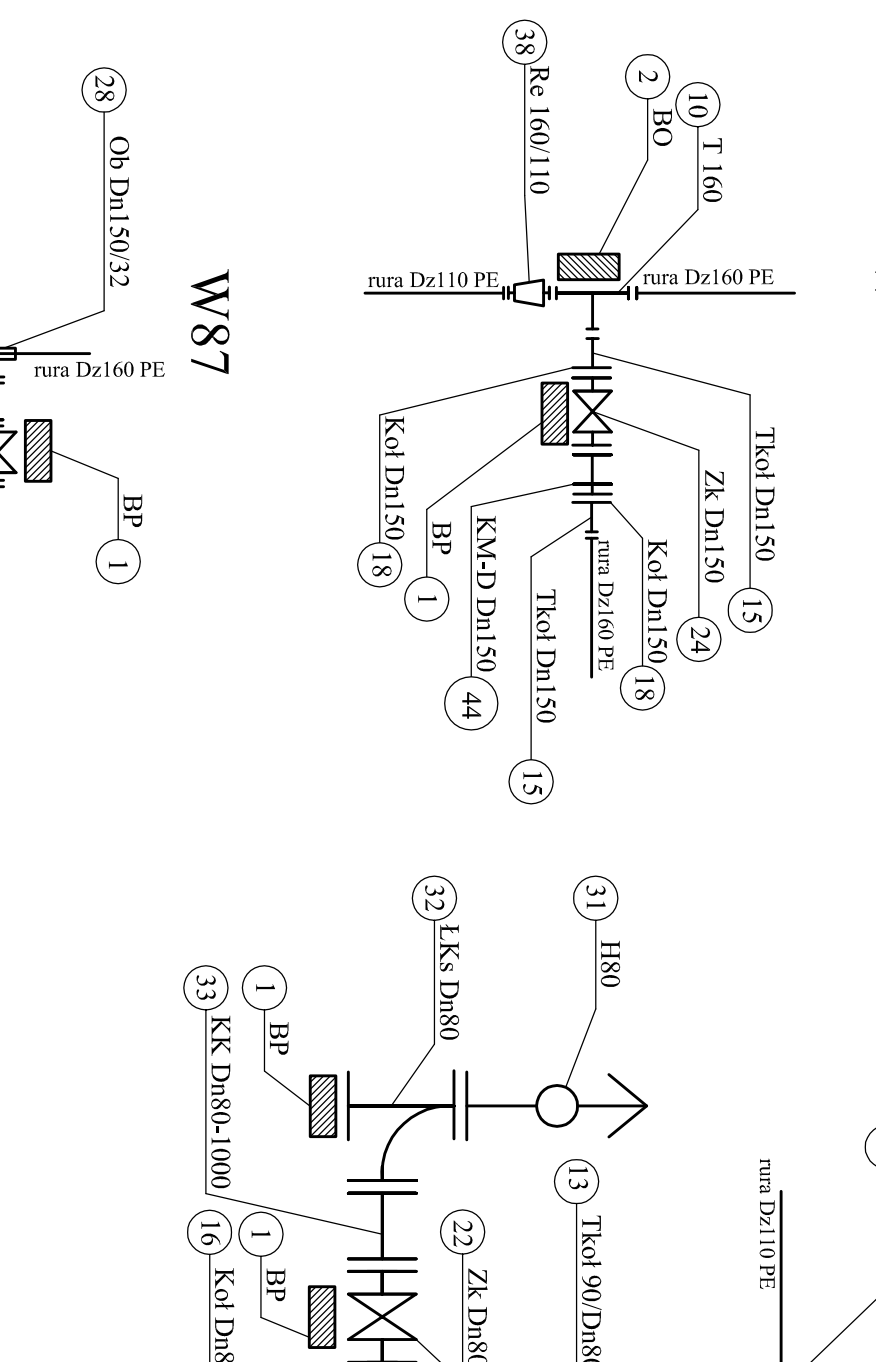
W58



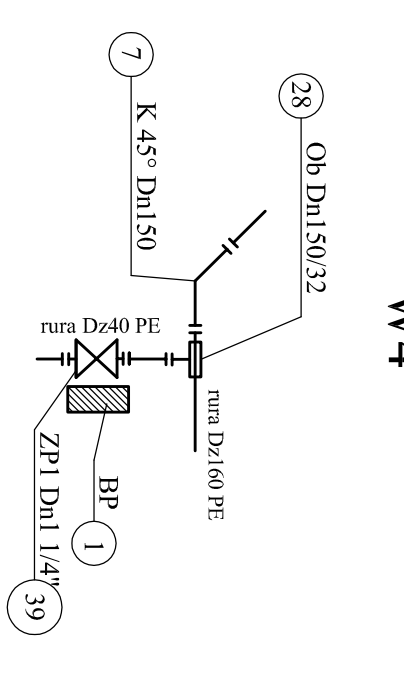
W2



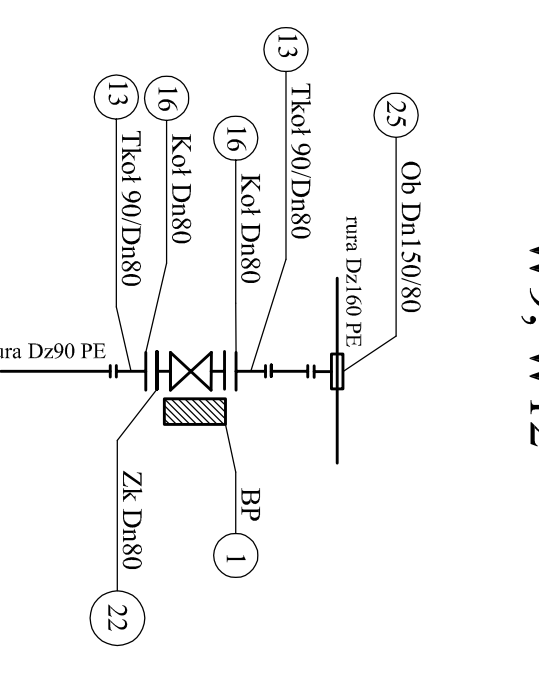
W79



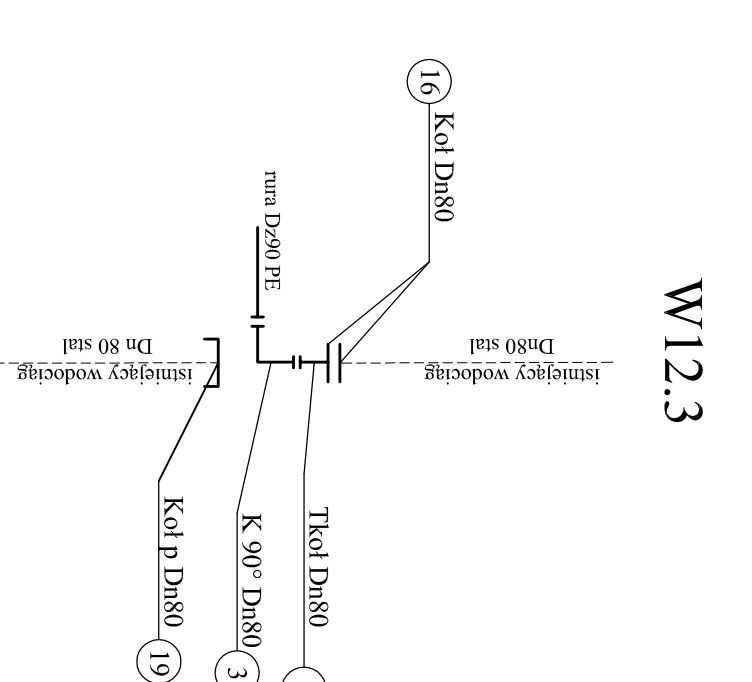
W4



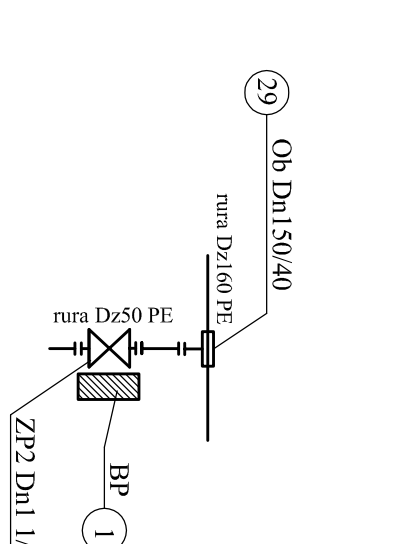
W9, W12



W12.3



W18, W23, W39, W43



W3, W4a, W5, W6, W7, W8, W11, W13, W14, W16, W17, W19, W20, W21, W22, W24 W25, W26, W27, W28, W29, W30, W31 W32, W33, W34, W35, W36, W37, W38 W40, W41, W42, W44, W45, W46, W47 W48, W50, W51, W52, W53, W54, W55 W56, W57, W59, W60, W61, W62, W63 W64, W64a, W65, W66, W67, W68, W69 W70, W71, W80, W81, W82, W83, W84 W85, W86, W88, W90, W91, W92, W93 W94, W95, W96, W97, W99, W100, W101, W103, W104, W105, W106, W107, W108

Hydrant nadziemny

H12

W72

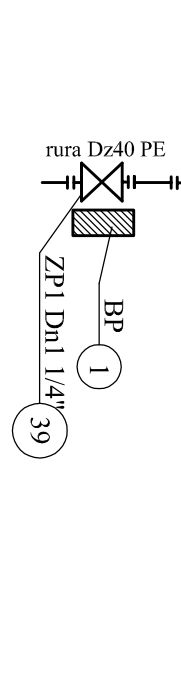
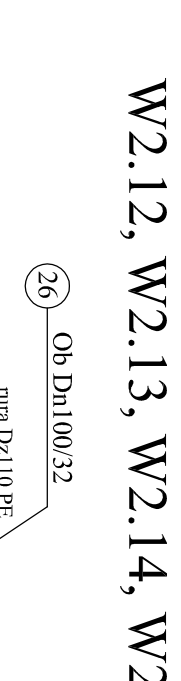
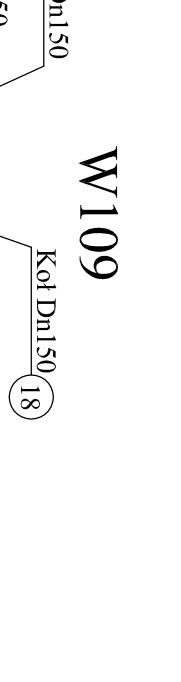
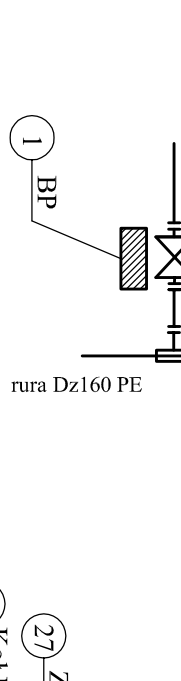
W77

W87

W98

W109

W110, W111, W113, W73, W74, W75, W76, W77, W78 W2.2, W2.3, W2.4, W2.5, W2.6, W2.7, W2.8, W2.9, W2.10 W2.12, W2.13, W2.14, W2.15, W2.17



Hydrant nadziemny na rurze Dż110

H15

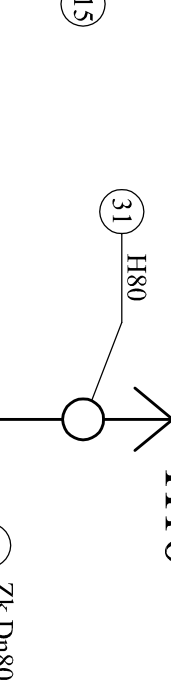
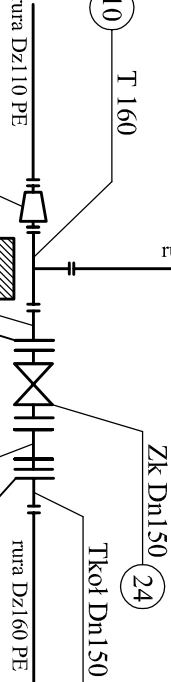
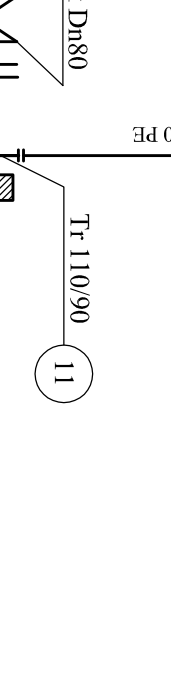
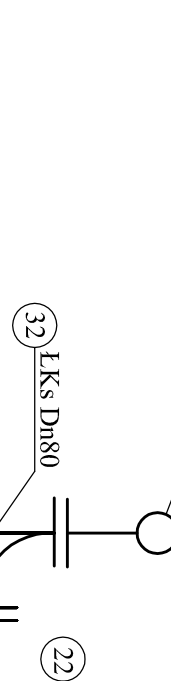
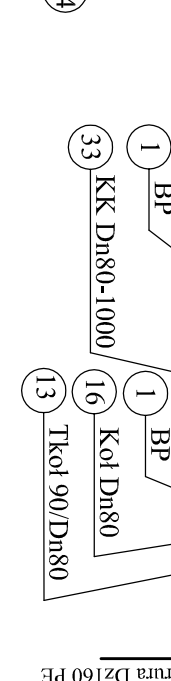
W2.1

W2.22

W2.16

W109

W110, W111, W113, W73, W74, W75, W76, W77, W78 W2.2, W2.3, W2.4, W2.5, W2.6, W2.7, W2.8, W2.9, W2.10 W2.12, W2.13, W2.14, W2.15, W2.17



|  |  |   |  |
|--|--|---|--|
|  |  | Inwestycja:<br>Przebudowa sieci wodociągowej w<br>ul. Wolności w Sączowie |  |
| Projektant:<br>mgr inż. Paweł Pióro<br>nr upraw. SIK4463/P008/12 |  | Stadium:<br>Projekt budowlano - wykonawczy                                |  |
| Opiewani:<br>mgr inż. Katarzyna Paszek                           |  | Tytuł rysunku:<br>Schematy montażowe węzłów                               |  |
| Sprawił:<br>mgr inż. Joanna Cios<br>nr upraw. 17281 BB           |  | Skala:<br>20:1; 1:16  |  |
| Data:<br>10.2016 r   |  | Nr rysunku:<br>8  |  |